






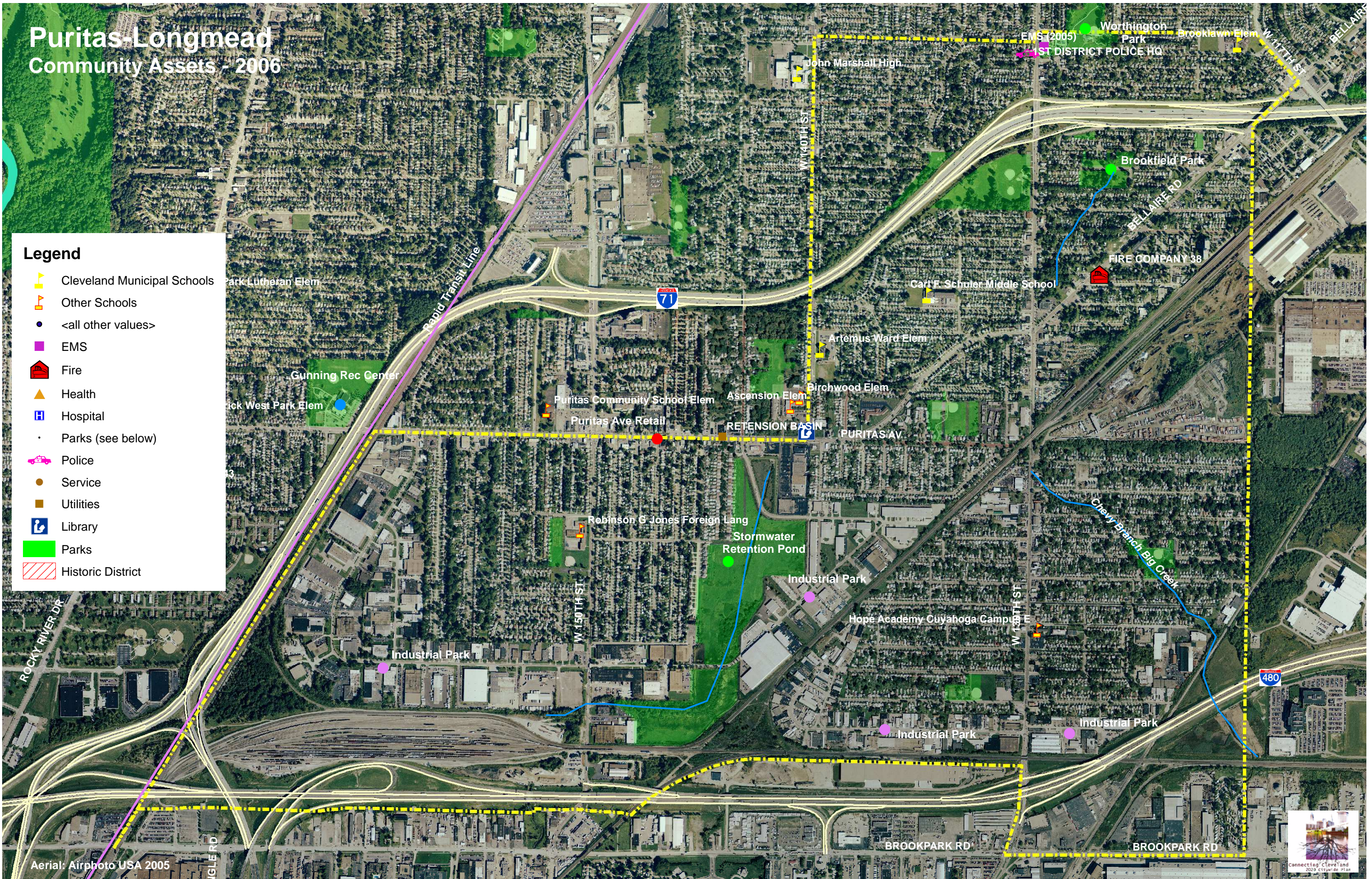


# Puritas-Longmead Community Assets - 2006

## Legend

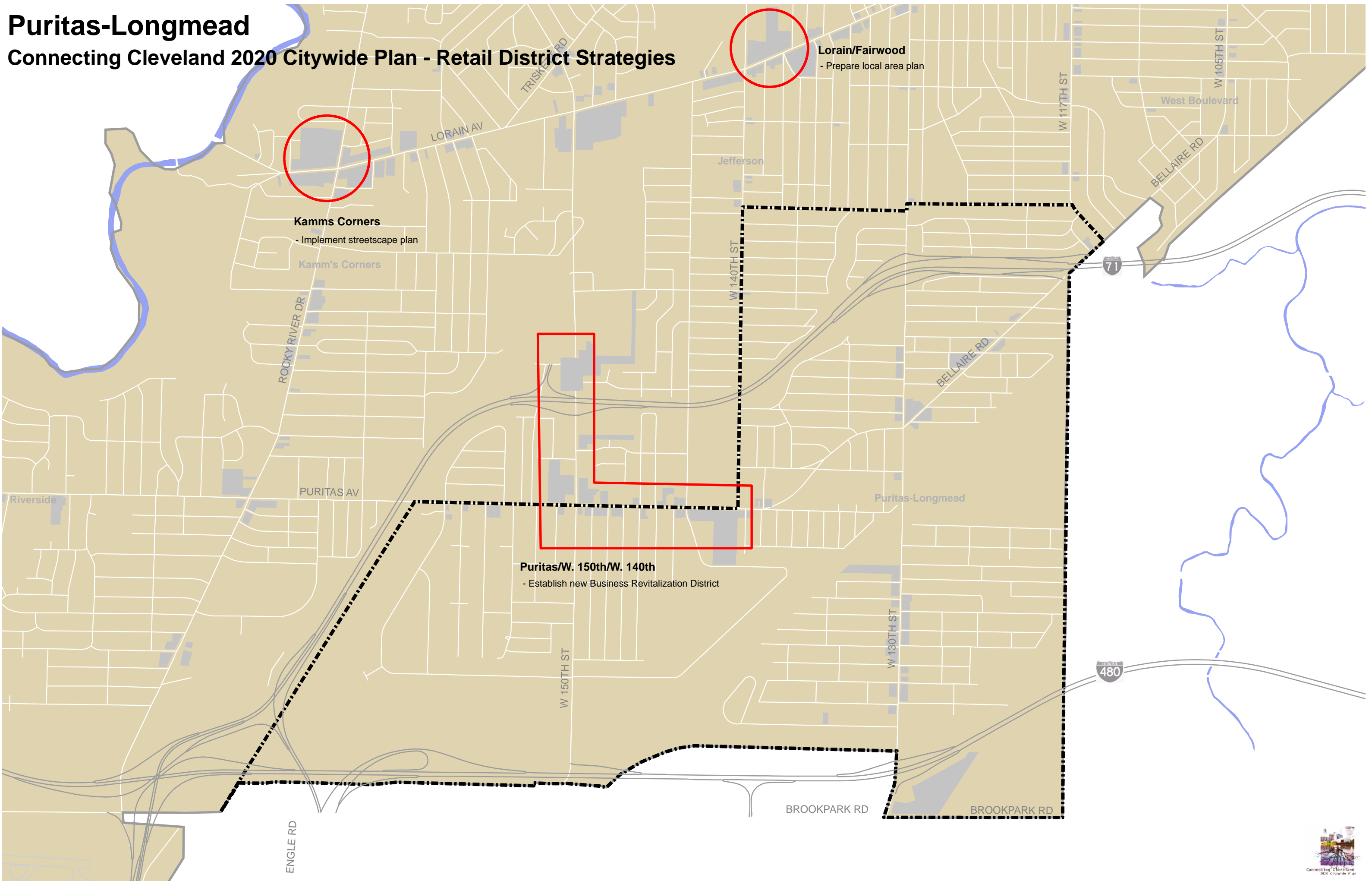
-  Cleveland Municipal Schools
-  Other Schools
-  <all other values>
-  EMS
-  Fire
-  Health
-  Hospital
-  Parks (see below)
-  Police
-  Service
-  Utilities
-  Library
-  Parks
-  Historic District





# Puritas-Longmead

## Connecting Cleveland 2020 Citywide Plan - Retail District Strategies



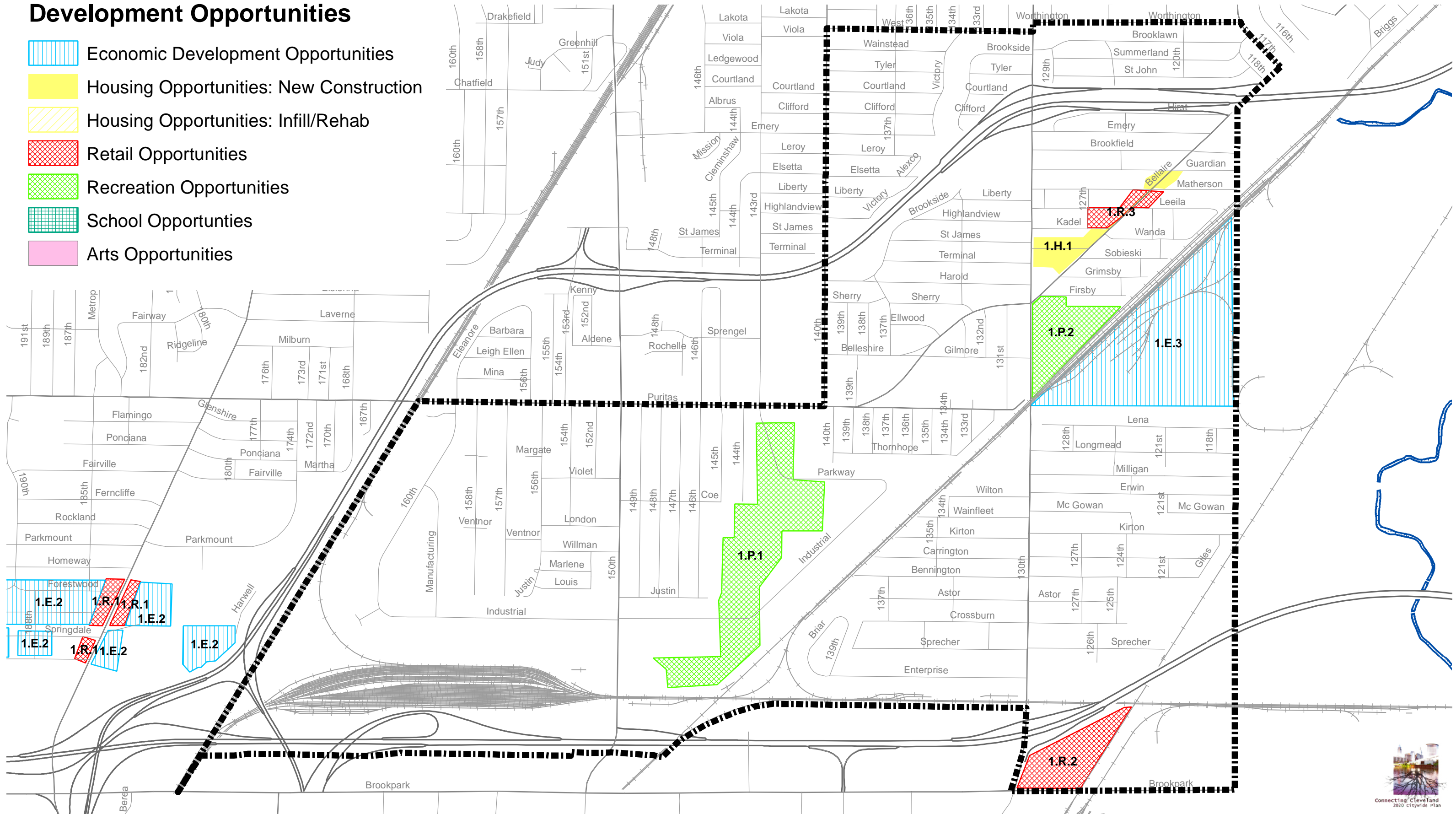
# Puritas-Longmead

## Connecting Cleveland 2020 Citywide Plan - Development Opportunities

- 1.E.3 Abrams Site – heavy and/or light industrial use
- 1.H.1 Bellaire Corridor – mixed-use, single-family, townhouse development
- 1.P.1 Stormwater Detention Pond – opportunity for bird sanctuary and passive recreation
- 1.P.2 Bellaire Road – opportunity for bioremediation of soil and conversion to natural/passive greenspace
- 1.R.1 Rocky River Drive Sites – opportunity for stand-alone or mixed-use retail
- 1.R.4 Lorain Corridor – opportunity for retail in conjunction with streetscape improvements

### Development Opportunities

-  Economic Development Opportunities
-  Housing Opportunities: New Construction
-  Housing Opportunities: Infill/Rehab
-  Retail Opportunities
-  Recreation Opportunities
-  School Opportunities
-  Arts Opportunities



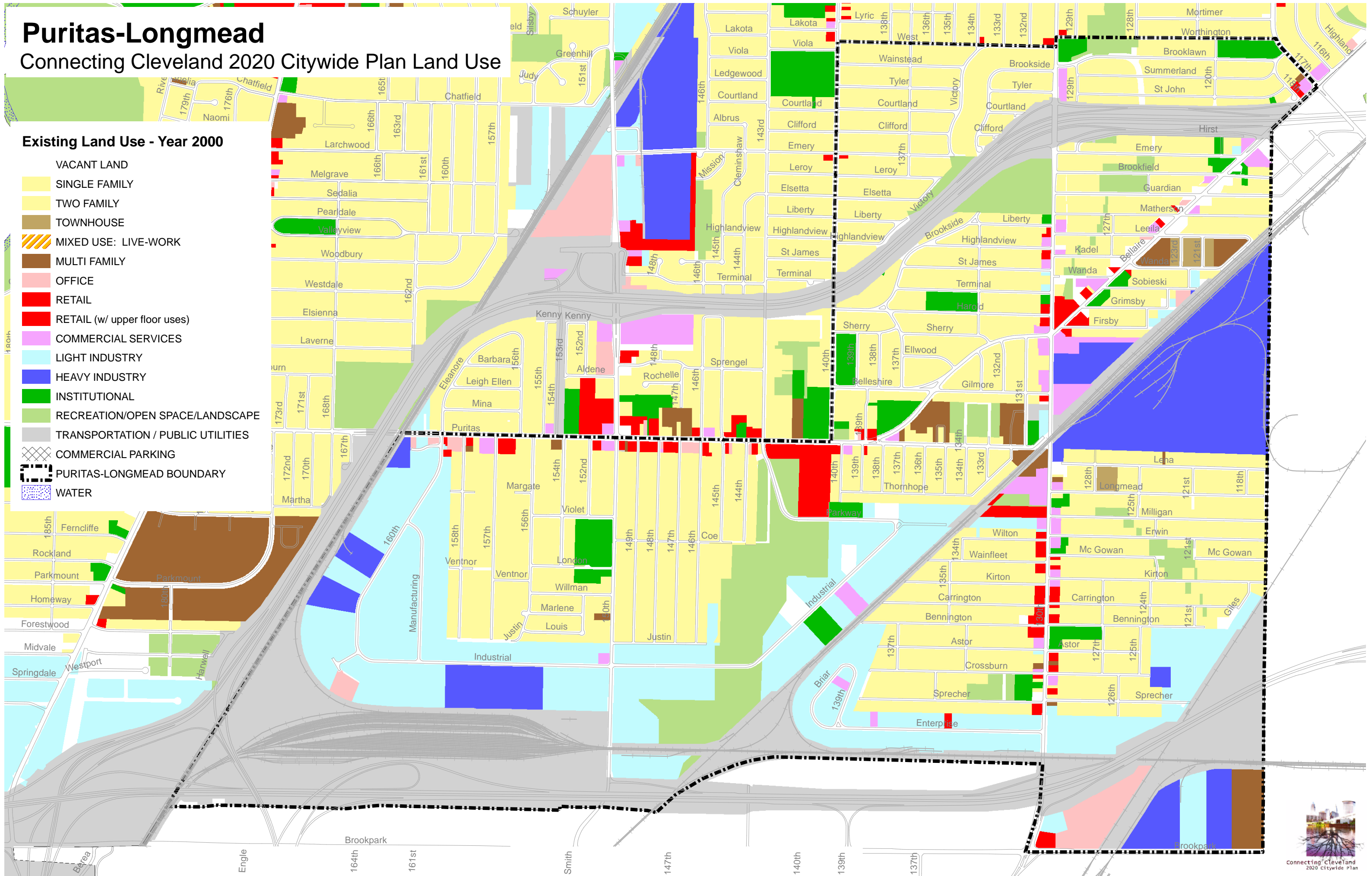


# Puritas-Longmead

## Connecting Cleveland 2020 Citywide Plan Land Use

### Existing Land Use - Year 2000

- VACANT LAND
- SINGLE FAMILY
- TWO FAMILY
- TOWNHOUSE
- MIXED USE: LIVE-WORK
- MULTI FAMILY
- OFFICE
- RETAIL
- RETAIL (w/ upper floor uses)
- COMMERCIAL SERVICES
- LIGHT INDUSTRY
- HEAVY INDUSTRY
- INSTITUTIONAL
- RECREATION/OPEN SPACE/LANDSCAPE
- TRANSPORTATION / PUBLIC UTILITIES
- COMMERCIAL PARKING
- PURITAS-LONGMEAD BOUNDARY
- WATER



# Puritas-Longmead

## Connecting Cleveland 2020 Citywide Plan Land Use

### Proposed Land Use - Year 2020

- SINGLE / TWO FAMILY
- MIXED USE: DOWNTOWN
- TOWNHOUSE
- MULTI FAMILY
- MIXED USE: RESIDENTIAL + RETAIL/OFFICE
- MIXED USE: LIVE-WORK
- OFFICE
- RETAIL
- COMMERCIAL SERVICES
- LIGHT INDUSTRY
- HEAVY INDUSTRY
- INSTITUTIONAL
- RECREATION/OPEN SPACE/LANDSCAPE
- TRANSPORTATION / PUBLIC UTILITIES
- PARKING (DOWNTOWN ONLY)
- PURITAS-LONGMEAD BOUNDARY
- WATER

