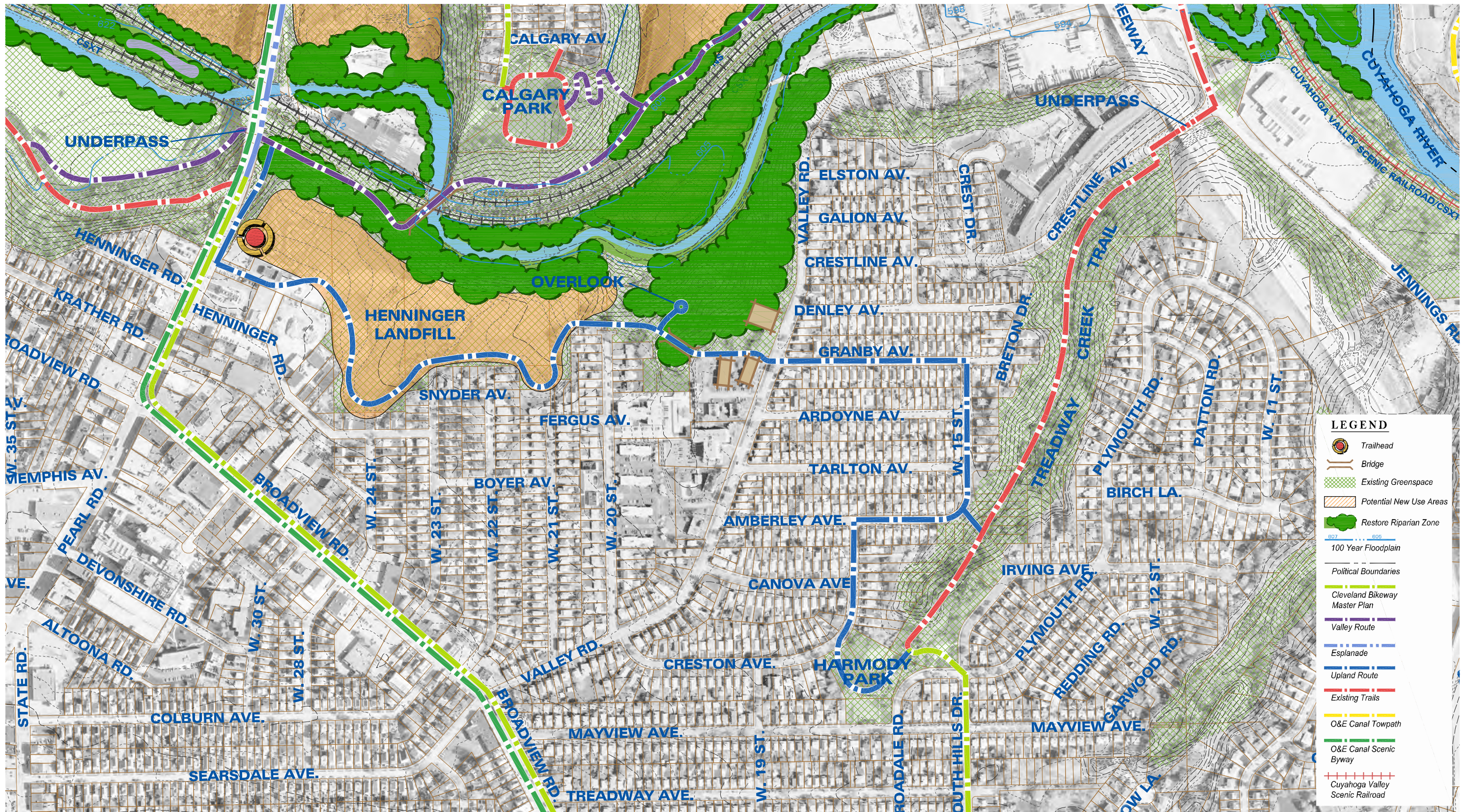

Appendix B

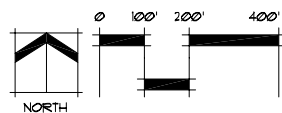
Master Plan Maps





Lower Big Creek Greenway Redevelopment & Restoration Plan

Upland Route - Trail Plan & Restoration



Client Partners:



Prepared By:



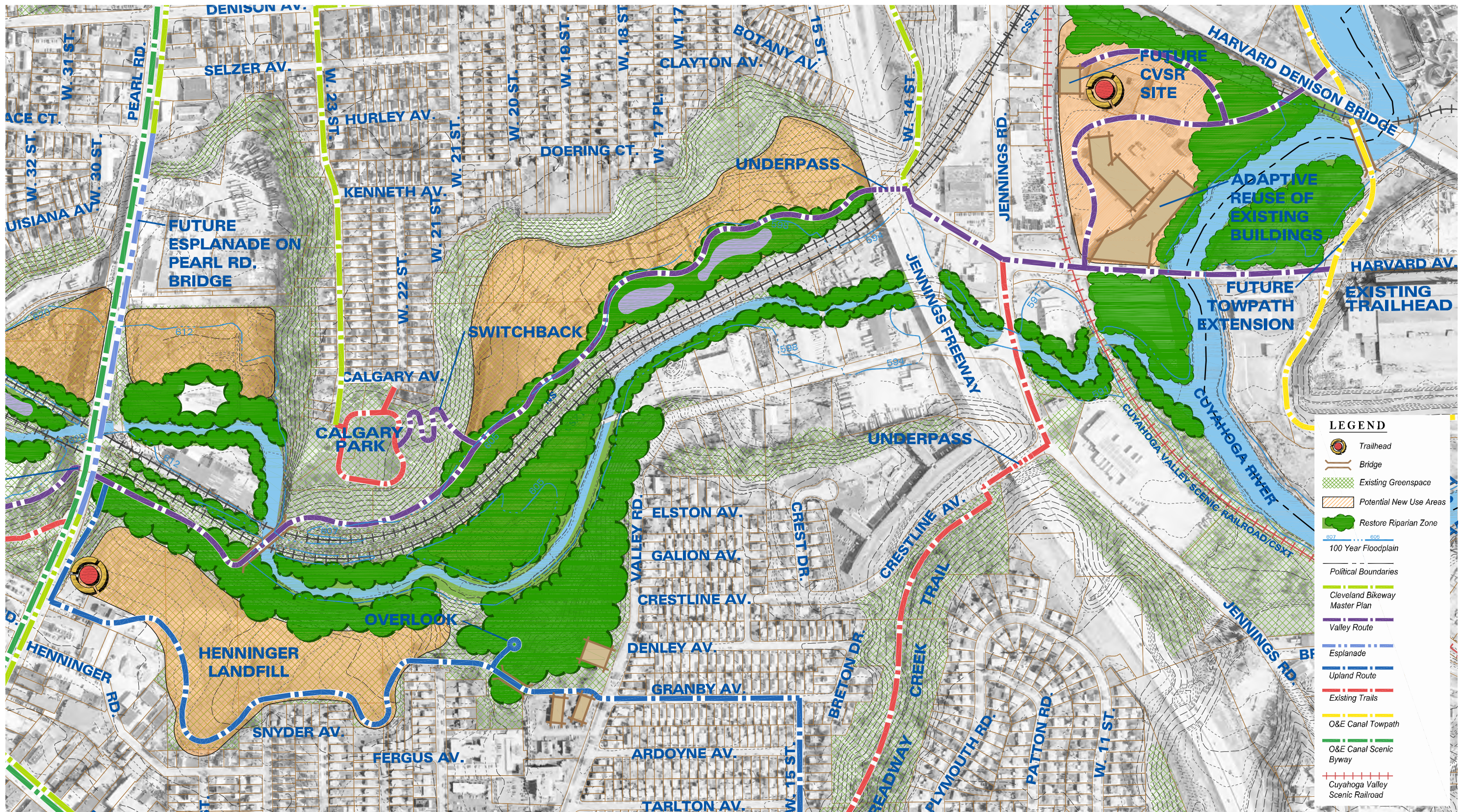
Northeast Ohio
330.375.1390
330.375.1690 fax
800.325.7647

Solutions for Your World
www.FloydBrowne.com

in association with

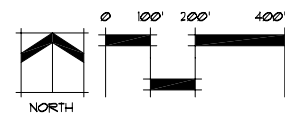


schmidtcopelandparkerstevens



Lower Big Creek Greenway Redevelopment & Restoration Plan

Valley Route - Trail Plan & Restoration



Client Partners:



Prepared By:



Northeast Ohio
330.375.1390
330.375.1690 fax
800.325.7647

Solutions for Your World
www.FloydBrowne.com

in association with



schmidtcopelandparkerstevens

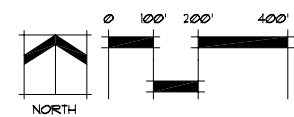


LEGEND

- Trailhead
- Bridge
- Existing Greenspace
- Potential New Use Areas
- Restore Riparian Zone
- 100 Year Floodplain
- Political Boundaries
- Cleveland Bikeway Master Plan
- Valley Route
- Esplanade
- Upland Route
- Existing Trails
- O&E Canal Towpath
- O&E Canal Scenic Byway
- Cuyahoga Valley Scenic Railroad

Lower Big Creek Greenway Redevelopment & Restoration Plan

Valley Route - Trail Plan & Restoration



Client Partners:

- OHIO CANAL CORRIDOR
- CITY OF CLEVELAND, OHIO

OLD BROOKLYN
GATEWAY TO THE ZOO

Prepared By:

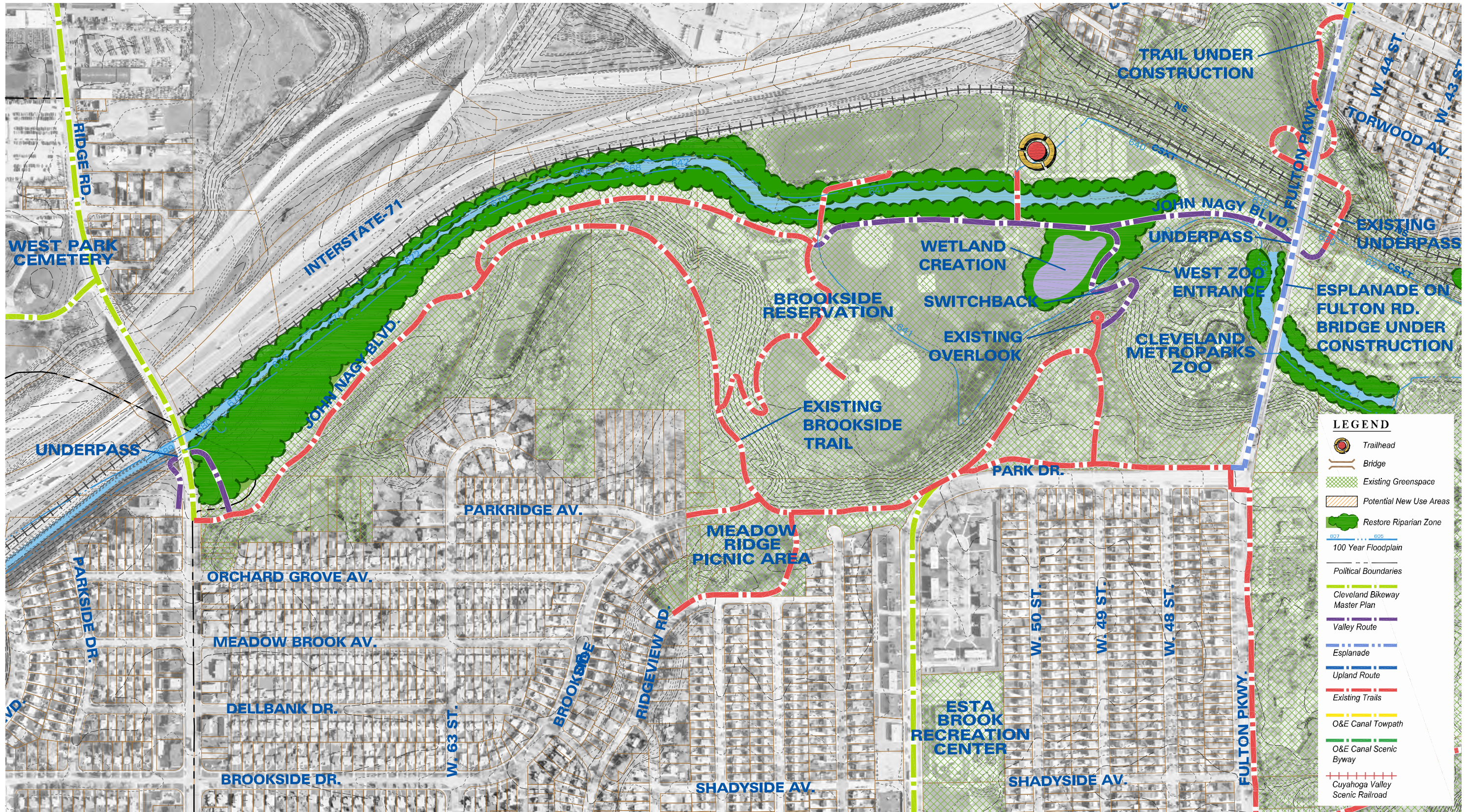
Floyd Browne Group
Solutions for Your World
www.FloydBrowne.com

Northeast Ohio
330.376.1390
330.376.1690 fax
800.325.7647

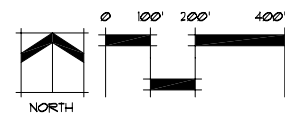
in association with

schmidtpoplandparkerstevens

E:\OLD BROOKLYN CDC\07-60176-010\DESIGN\PLAN\BASEMAP FOR PLAN CONCEPTS.DWG - 5/27/2008 8:41:30 AM



Valley Route - Trail Plan & Restoration



Client Partners:



Prepared By:

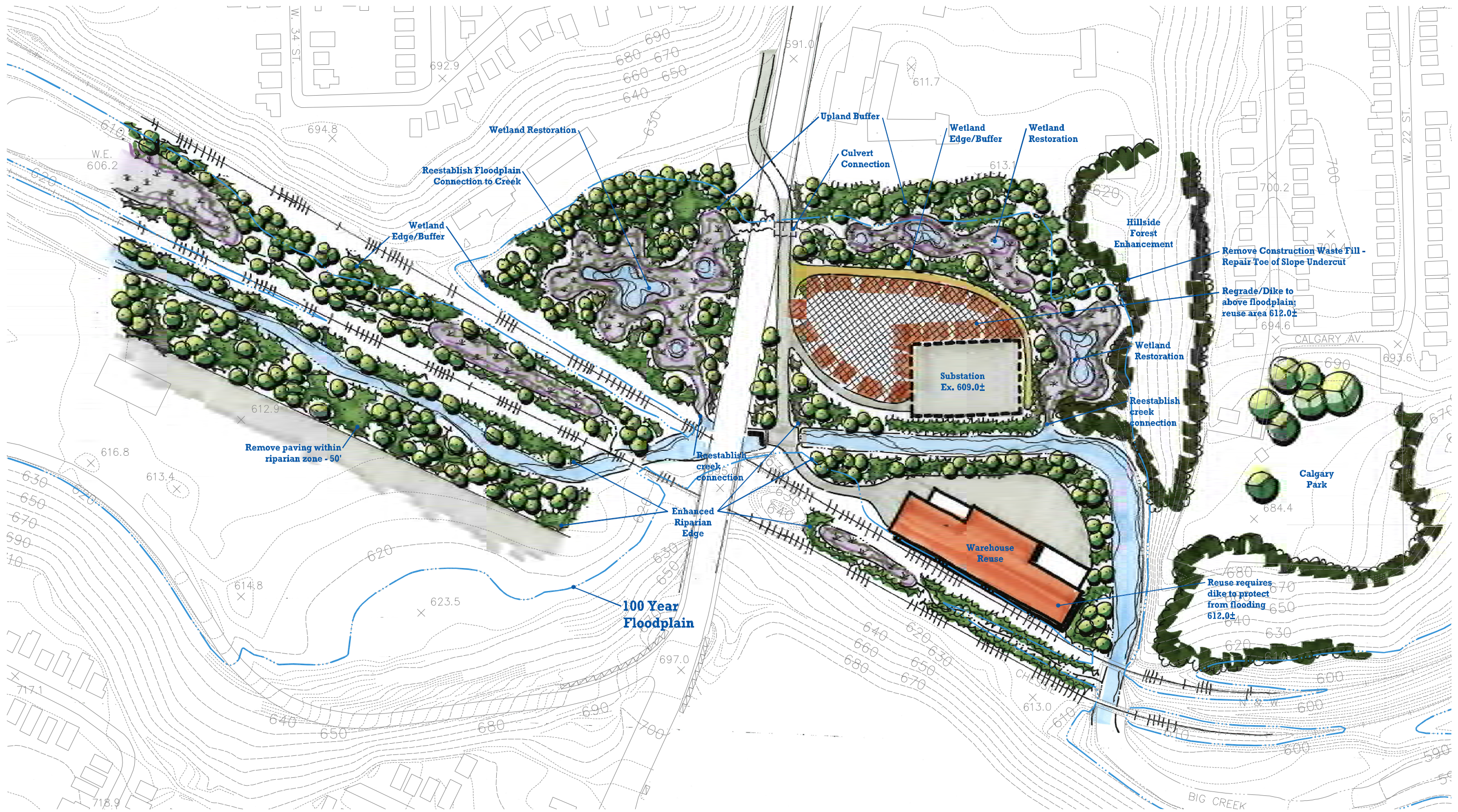


Northeast Ohio
330.375.1390
330.375.1590 fax
800.325.7647

in association with

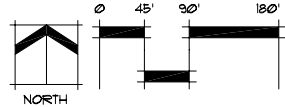


schmidtcopelandparkerstevens



Lower Big Creek Greenway Redevelopment & Restoration Plan

Brookside Auto Park Site - Ecological Restoration Option



Client Partners:



Prepared By:



Northeast Ohio
330.375.1390
330.375.1590 fax
800.325.7647

Solutions for Your World
www.FloydBrowne.com

in association with

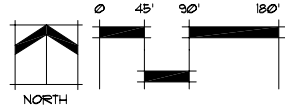


schmidtcopelandparkerstevens



Lower Big Creek Greenway Redevelopment & Restoration Plan

Henninger Landfill Site - Adventure Sports Option



Client Partners:



Prepared By:



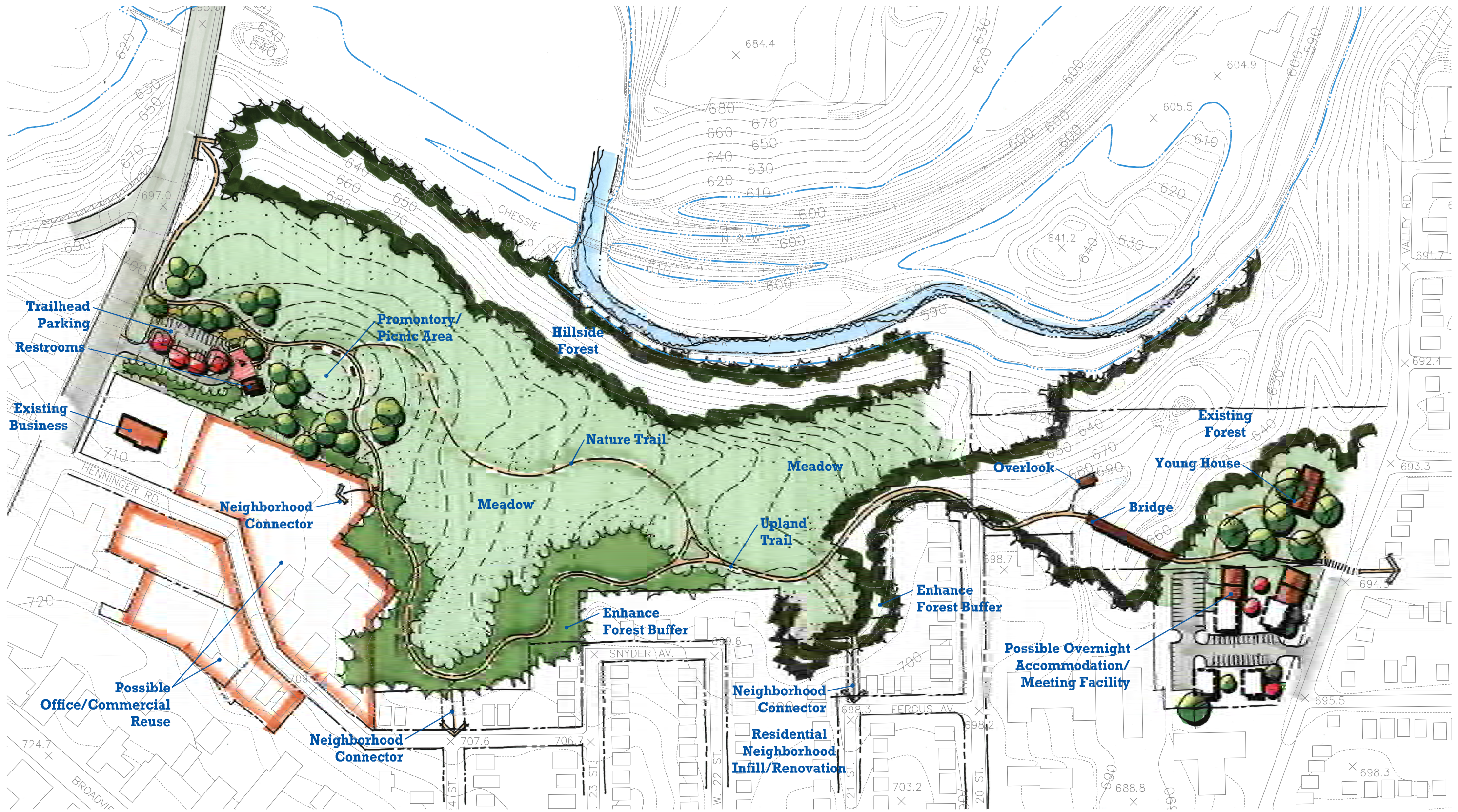
Northeast Ohio
330.375.1390
330.375.1590 fax
800.325.7647

Solutions for Your World
www.FloydBrowne.com

in association with

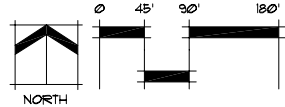


schmidtcopelandparkerstevens



Lower Big Creek Greenway Redevelopment & Restoration Plan

Henninger Landfill Site - Ecological Restoration Option



Client Partners:



Prepared By:



Northwest Ohio
330.375.1390
330.375.1590 fax
800.325.7647

Solutions for Your World
www.FloydBrowne.com

in association with

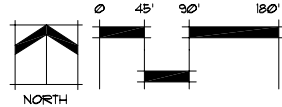


schmidtcopelandparkerstevens



Lower Big Creek Greenway Redevelopment & Restoration Plan

Martin Enterprises Site - Ecological Restoration Option



Client Partners:



Prepared By:



Solutions for Your World
www.FloydBrowne.com

in association with



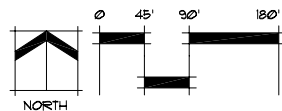
schmidcopelandparkerstevens

Northeast Ohio
330.375.1390
330.375.1590 fax
800.325.7647



Lower Big Creek Greenway Redevelopment & Restoration Plan

Lustig Trust Site - Campground Option



Client Partners:



Prepared By:



Solutions for Your World
www.FloydBrowne.com

in association with



schmidcopelandparkerstevens

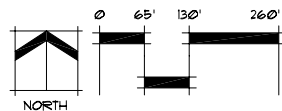
Northeast Ohio
330.375.1390
330.375.1590 fax
800.325.7647



- Parking for Rail/Trail Visitors
- Remove Existing Rail Tracks
- Restore Ecology - Native Meadow, Shrub Edge & Woodland
- 100 Year Floodplain
- Harvard Ave. Station
- Cuyahoga Valley Scenic Railroad
- Lower Big Creek Greenway Trail Connection
- Adaptive Reuse - Commercial/Office or Scenic Railroad/Metroparks Operations
- Streetscape Enhancement to Complement Trail
- Zeleznik's Restaurant
- Existing Canal Reservation Trailhead
- Canoe Livery Parking & Connector Trail
- Possible Canoe Take-out
- Enhanced Riparian Zone Plantings

Lower Big Creek Greenway Redevelopment & Restoration Plan

Harshaw Chemical Site - Trail & Land Use Options



Client Partners:



Prepared By:



Northeast Ohio
330.375.1390
330.375.1590 fax
800.325.7647

in association with



schmidtcopelandparkerstevens